



SUPER SPRINTER

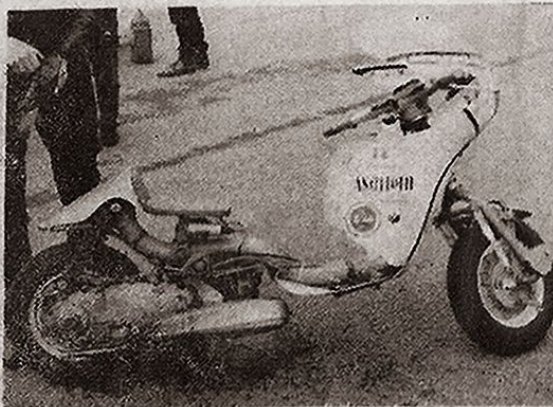
... takes to the track at Elvington race meet.

● "Have you got your ticket Sir?" I produced a ticket marked 'Admit One' and in true James Bond style, barriers were lifted and I drove onto the main runway of the top secret R.A.F. Station at Elvington in Yorkshire.

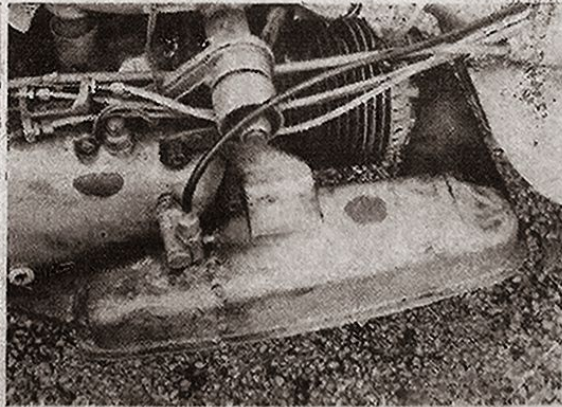
There I found gathered some of the fastest machines in Britain, both in the bike and car world, all intent on breaking records. One machine, which particularly caught my eye, was Alberto Ancillotti's scooter—a 250 cc Lambretta, sponsored by the Nannucci accessory company of London.

He had built it in his garage in Florence with the help of his brother and had brought it to England to compete in the 'World Record Attempts', organised by the National Sprint Association.

His scooter started life as a standard 200 cc Lambretta but by the time Alberto and his brother had brought it to England it was far from standard. The frame was cut down around the headstock and at the rear end, so that different suspension units



1 General side view of the scooter shows how much lower it is compared with a standard model. The handlebars have been lowered and dampers shortened.



2 Rev counter drive is taken off the side of the crankcase and is driven from the end of the crankshaft. The expansion box is made up from standard boxes.